



"Custom Solutions for your Application"

EAGLE HYDRAULIC PIPE VISE

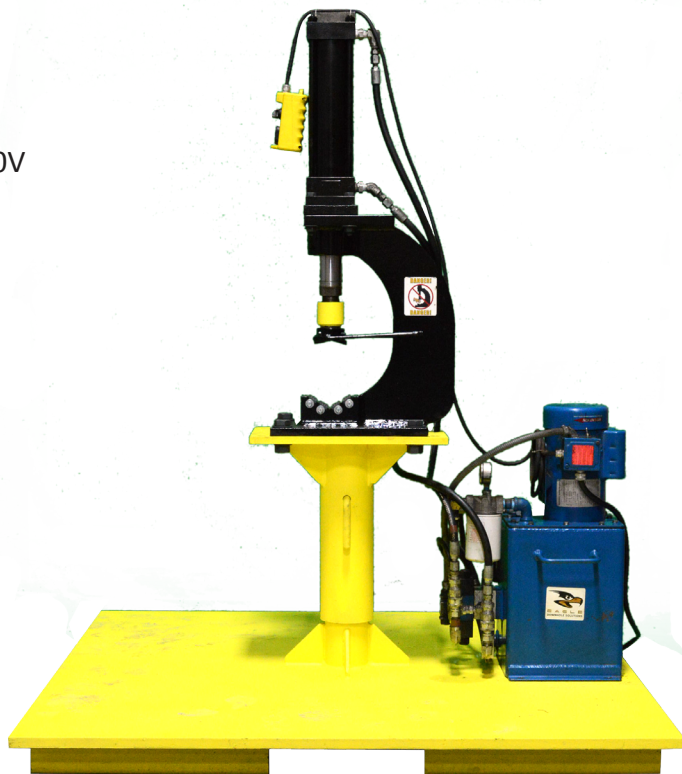
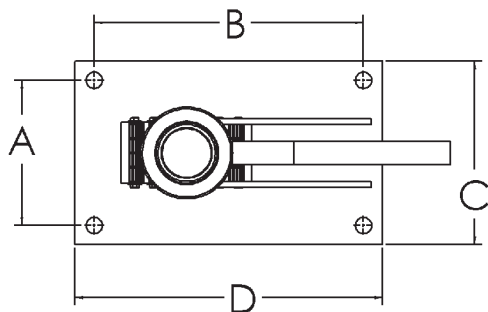
Eagle Quality for a Vise You Can Count On

These vises are ruggedly built for oilfield application. They are fabricated from steel plate and utilize standard API tong dies for gripping. There is no cast material in the vise in order to minimize the risk of material embrittlement and failure under extreme use.

Advantages

- Clamp/Unclamp time reduced
- Adjustable clamp pressure
- Hydraulic power unit uses single-phase 110V
- In-line check valve keeps pressure down, especially during power outages

Our vises are offered in five (5) sizes:
8-1/2", 12-1/2", 16", 18", 22"
 Hydraulic vises are not kept in stock.
 Typical delivery is 8-10 weeks



SIZE	MIN PIPE O.D.	MAX PIPE O.D.	HOLE SIZE	A	B	C	D
8-1/2"	1-1/2"	8-1/2"	1-1/8"	9-1/2"	9-1/2"	12"	12"
12-1/2"	1-1/2"	12-1/2"	1-1/8"	9-1/2"	13-1/2"	12"	16"
16"	2"	16"	1-1/8"	9-1/2"	17-1/2"	12"	20"
18"	2"	18"	1-1/8"	9-1/2"	17-1/2"	12"	20"
22"	2"	22"	1-1/8"	9-1/2"	17-1/2"	12"	20"

13932 Old Texaco Rd. | Conroe, TX 77302 | www.eagledownhole.com

©Copyright 2009, by Eagle Downhole Solutions, LLC. All rights reserved. Not to be used, transmitted, in any form, or by any means, or copied without prior written permission of Eagle Downhole Solutions, LLC.